

**Non-Apparel**

**General Catalog**

**PLK-*J*** **PLK-G**  
LY, LU, XC-G

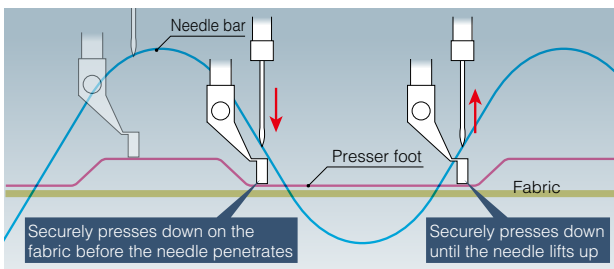


# PLK Series

Everything to improve usability

## Fabric presser with optimal pressure

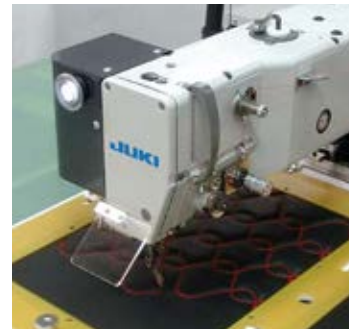
A new motion control allows the presser foot to press down on various types of fabric, from thin to thick materials, with optimal pressure.



## Faster and more attractive

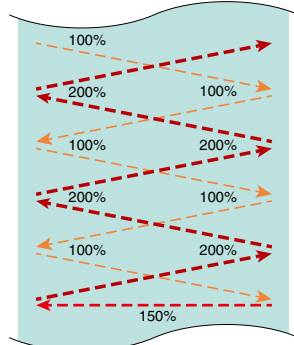
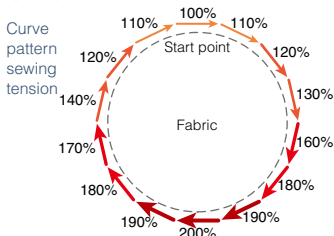
The world's highest class of actual sewing speed is achieved (as of April 2020). Curves and large seams can be sewn quickly and beautifully.

\* 3.0mm pitch: 2,300rpm  
(PLK-J6040R intermittent feed)



## Optimizes thread tightness in all stitching directions

This function reduces variation in tightness according to the stitching direction and improve quality.



## Automatic checking of setting mistakes

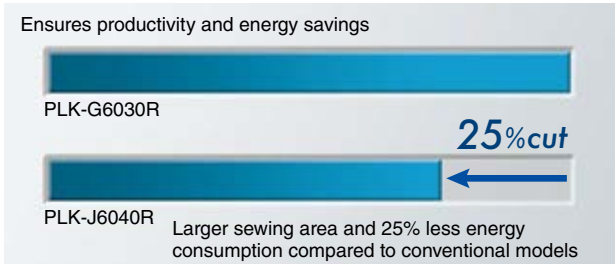
The sewing machine checks the thickness of the fabric and detects setting mistakes prior to sewing.

The oiling timing of the hook is digitized to ensure proper oiling and prevent excessive oil use.



## Excellent energy-saving effects

The new arm bed structure and new XY feed control realize low vibration and low sound, and thereby realize energy savings.

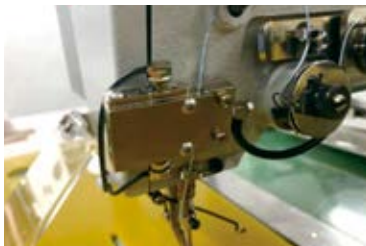


\* Enforce with conditions designated by the company

## Detects stitching errors\*

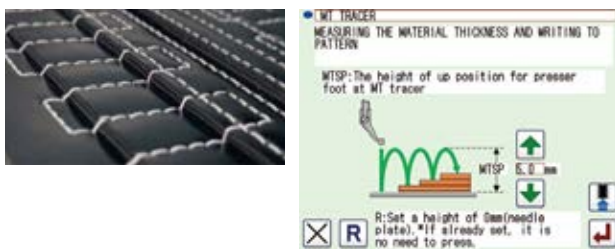
In addition to visual detection by the operator, stitch errors (skipped stitches, thread breaks) are detected by the machine to help discover defective items.

\*This function does not warranty all abnormal stitch detections. Depending on the sewing conditions, there may be undetected or false detection.



## Faster adjustment of presser foot height

The height of the presser foot is adjusted after automatically measuring the overall fabric thickness along the stitching pattern.



## Open/close window for bobbin exchange

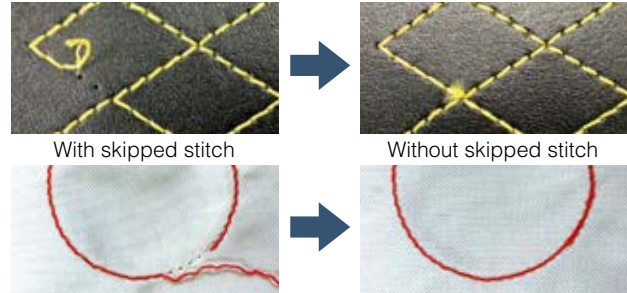
Unlike conventional large models which required the operator to get under the sliding plate to replace the bobbin, the J series models have an open/close window on the sliding plate so that the bobbin can be easily exchanged. This greatly reduces the operator's work.

\* Excludes  
PLK-J2516-YU/  
J2516R-YU



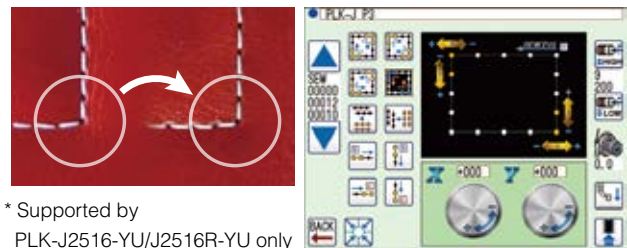
## Stable thread interlocking from the first stitch

"Stitch interlock faults" are resolved by minimizing the flapping of fabric at the start of stitching.



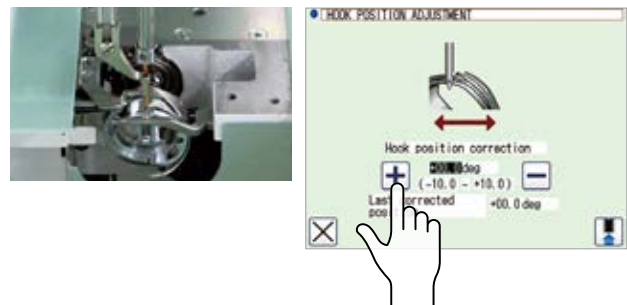
## Neat corners by anyone

Corner stitches, start of stitching and end of stitching can be adjusted intuitively and easily.



## Faster adjustment and reproduction of past adjustments

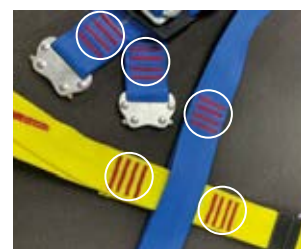
The hook, presser foot, and thread trimmer are digitally adjusted.



## Quick sewing of even thick materials

Work efficiency is greatly improved with batch stitching.

\* Supported by  
PLK-J4040RH/J10050RH only



# Traceability model which supports quality

## PLK-3020R-SE

In addition to acquiring sewing information, pressure on take-up lever and changes of material thickness during sewing operation can be collected and accumulated. This machine come standard with traceability functions. With the help of independently driven take-up lever, we will offer better sewing quality compared to our previous models (PLK-G series).

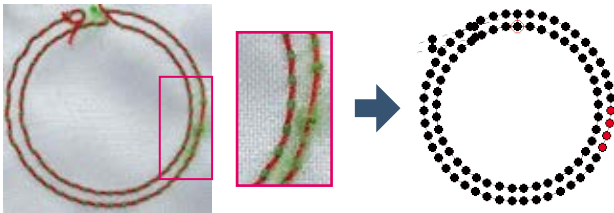


### Traceability

#### Monitoring the pressure on take-up lever during the sewing operation

By detecting the pressure on take-up lever during the operation, every stitching condition can be monitored. It will help discover defective items such as skip stitches and fiber stitches.

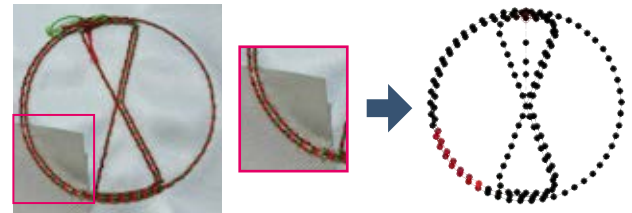
(Example) When fiber stitches occurred



#### Monitoring the changes of material thickness during the sewing operation

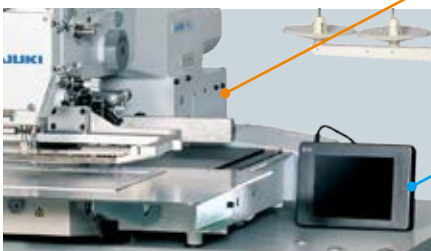
In addition to detecting material placement mistake, the machine can monitor the changes of material thickness during operation. When the changes occur, it helps discover additional or misplaced fabric.

(Example) When fabric was folded by mistake

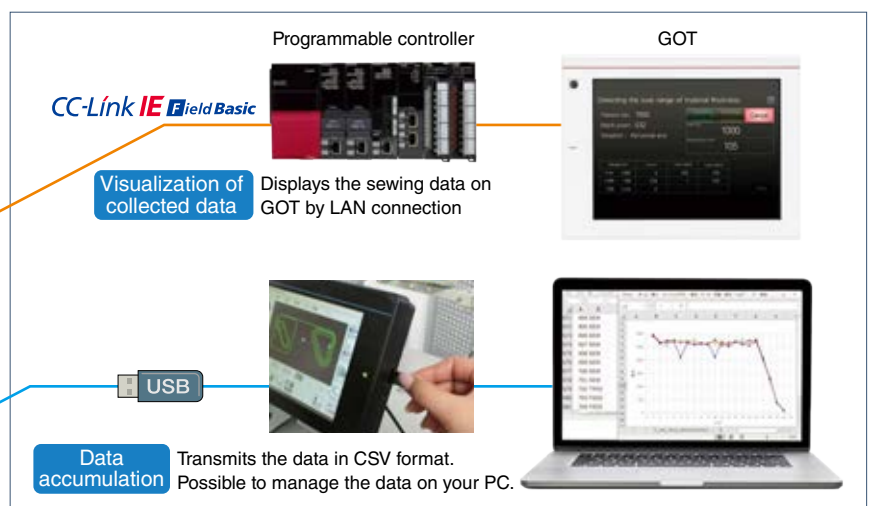


#### Save the sewing results

The data of take-up lever pressure and materials thickness can be accumulated into the sewing machine. It allows to utilize the data for quality control as well as for reliable data source to your clients. It is compatible with the company FA products which makes it possible to display data in a real time.



Data can be collected through USB or CC-Link



# assurance



## Improvement of sewing quality

### Reduces skip stitches at start of sewing

#### <SE-Stitch>

Even the remaining thread is short, it reduces skip stitches which may occur at the start of sewing cycle.

### Improves appearance (bird's nest) at start of sewing

#### <SE-Trim>

The remaining thread tail when trimming is adjustable to a certain length. It greatly reduces the case of bird's nest by adjusting the amount of thread tail on the back of the fabric.

### Before

Time consuming for adjustment of skipped stitches at the start of sewing, preventing birds nest and thread trimming, etc.

### Now

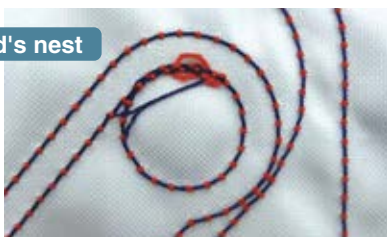
Improving skipped stitches and birds nest just by turning on this function

<SE-Stitch> Function ON  
<SE-Trim>

Skip stitches





Bird's nest




Improvement of skip stitches and bird's nest



PLK-J 2516-YU 

PLK-J 2516R-YU 

PLK-J 3020R-SE 



**Sewing area**  
300 x 200mm: PLK-J2516-YU/2516R-YU

Item	Model	PLK-J2516-YU	PLK-J2516R-YU
Stitching style		Single-needle lockstitch	
Hook		Double-size shuttle hook	Double-size rotary hook
Needle		DP x 17 #18	
Max. speed <sup>(Note 1)</sup>		Intermittent feed 2,300rpm, Continuous feed 2,300rpm	
Feeding system		Intermittent or continuous (switchover method)	
Stitch length		0.1 to 20.0mm (min. resolution 0.1mm)	
Max. stitches		20,000 stitches/pattern	
Max. patterns <sup>(Note 2)</sup>		9,000	
Memory medium		USB flash memory	
Work holder		Air cylinder drive	
Thread break detection, skipped stitch detection <sup>(Note 3)</sup>		Option available (MP-J25-AD)	
Stitch alert <sup>(Note 3)</sup>		-	
Outline dimensions		1,200 x 1,144 x 1,230mm (WxDxH)	
Mass		187kg	
Power supply		200 to 240V single-phase/three-phase	


Note 1: Sewing speed may be limited by the type of sewing material, presser weight, stitch length, etc.

Note 2: Max. patterns may be limited depending on the number of stitches per pattern in the memory.

Note 3: Detection of all stitch errors is not guaranteed. Always complete adjustments according to the stitching conditions before use.


**Sewing area**  
300 x 200mm: PLK-J3020R-SE

Item	Model	PLK-J3020R-SE
Stitching style		Single-needle lockstitch
Hook		Double size rotary hook
Needle		DPx 17 #18
Max. speed <sup>(Note 1)</sup>		Intermittent feed 2,300rpm, Continuous feed 2,300rpm
Feeding system		Intermittent or continuous (switchover method)
Stitch length		0.1 to 20.0mm (min. resolution 0.1mm)
Max. stitches		20,000 stitches/pattern
Max. patterns <sup>(Note 2)</sup>		9,000
Memory medium		USB flash memory
Work holder		Air cylinder drive
Thread break detection, skipped stitch detection <sup>(Note 3)</sup>		Option available (MP-J25-AD)
Stitch alert <sup>(Note 3)</sup>		-
Outline dimensions		1,200 x 1,144 x 1,320mm (WxDxH)
Mass		190kg
Power supply		200 to 240V single-phase/three-phase

PLK-J 4040/6040 

PLK-J 4040R/6040R 

PLK-J 4040R3/6040R3 

PLK-J 4040RH 



**Sewing area**

**400 x 400mm: PLK-J4040/4040R/4040R3**

**600 x 400mm: PLK-J6040/6040R/6040R3**

Item	Model		
	PLK-J4040/ PLK-J6040	PLK-J4040R/ PLK-J6040R	PLK-J4040R3/ PLK-J6040R3
Stitching style	Single-needle lockstitch		
Hook	Double-size shuttle hook	Double-size rotary hook	Triple-size rotary hook
Needle	DP x 17 #18		
Max. speed <sup>(Note 1)</sup>	Intermittent: 2,000rpm Continuous: 2,000rpm	Intermittent: 2,300rpm Continuous: 2,500rpm	
Feeding system	Intermittent or continuous (switchover method)		
Stitch length	0.1 to 20.0mm (min. resolution 0.1mm)		
Max. stitches	20,000 stitches/pattern		
Max. patterns <sup>(Note 2)</sup>	9,000		
Memory medium	USB flash memory		
Work holder	Chucking system		
Thread break detection, skipped stitch detection <sup>(Note 3)</sup>	Standard equipment		
Stitch alert <sup>(Note 3)</sup>	-		
Outline dimensions	1,350 x 1,570 x 1,205mm (WxDxH)		
Mass	440kg		
Power supply	200 to 240V single-phase/three-phase		

**Sewing area**


**400 x 400mm: PLK-J4040RH**

Item	Model	PLK-J4040RH
Stitching style		Single-needle lockstitch
Hook		6-fold rotary hook
Needle		DD x 1 #26
Max. speed <sup>(Note 1)</sup>		Intermittent feed 1,000rpm, Continuous feed 1,000rpm
Feeding system		Intermittent or continuous (switchover method)
Stitch length		0.1 to 20.0mm (min. resolution 0.1mm)
Max. stitches		20,000 stitches/pattern
Max. patterns <sup>(Note 2)</sup>		9,000
Memory medium		USB flash memory
Work holder		Chucking system
Thread break detection, skipped stitch detection <sup>(Note 3)</sup>		-
Stitch alert <sup>(Note 3)</sup>		Standard equipment
Outline dimensions		1,350 x 1,570 x 1,250mm (WxDxH)
Mass		460kg
Power supply		200 to 240V single-phase/three-phase

PLK-J10050 

PLK-J10050R 

PLK-J10050R3 

PLK-J10050RH 



**Sewing area**  
**1,000 x 500mm: PLK-J10050/10050R/10050R3**

Item	Model	PLK-J10050	PLK-J10050R	PLK-J10050R3
Stitching style		Single-needle lockstitch		
Hook		Double-size shuttle hook	Double-size rotary hook	Triple-size rotary hook
Needle		DP x 17 #21		
Max. speed <sup>(Note 1)</sup>		Intermittent: 2,000rpm Continuous: 2,000rpm	Intermittent: 2,500rpm Continuous: 2,500rpm	
Feeding system		Intermittent or continuous (switchover method)		
Stitch length		0.1 to 20.0mm (min. resolution 0.1mm)		
Max. stitches		20,000 stitches/pattern		
Max. patterns <sup>(Note 2)</sup>		9,000		
Memory medium		USB flash memory		
Work holder		Chucking system		
Thread break detection, skipped stitch detection <sup>(Note 3)</sup>		Standard equipment		
Stitch alert <sup>(Note 3)</sup>		-		
Outline dimensions		2,122 x 1,941 x 1,205mm (WxDxH)		
Mass		620kg		
Power supply		200 to 240V single-phase/three-phase		

Note 1: Sewing speed may be limited by the type of sewing material, presser weight, stitch length, etc.

Note 2: Max. patterns may be limited depending on the number of stitches per pattern in the memory.

Note 3: Detection of all stitch errors is not guaranteed. Always complete adjustments according to the stitching conditions before use.

**Sewing area**  
**1,000 x 500mm: PLK-J10050RH**

Item	Model	PLK-J10050RH
Stitching style		Single-needle lockstitch
Hook		6-fold rotary hook
Needle		DD x 1 #26
Max. speed <sup>(Note 1)</sup>		Intermittent feed 1,000rpm, Continuous feed 1,000rpm
Feeding system		Intermittent or continuous (switchover method)
Stitch length		0.1 to 20.0mm (min. resolution 0.1mm)
Max. stitches		20,000 stitches/pattern
Max. patterns <sup>(Note 2)</sup>		9,000
Memory medium		USB flash memory
Work holder		Chucking system
Thread break detection, skipped stitch detection <sup>(Note 3)</sup>		-
Stitch alert <sup>(Note 3)</sup>		Standard equipment
Outline dimensions		2,122 x 1,941 x 1,250mm (WxDxH)
Mass		640kg
Power supply		200 to 240V single-phase/three-phase



PLK-J12060 

PLK-J12060R 

PLK-J12060R3 



**Sewing area**

**1,200 x 600mm: PLK-J12060/12060R/12060R3**

Item	Model	PLK-J12060	PLK-J12060R	PLK-J12060R3
Stitching style		Single-needle lockstitch		
Hook		Double-size shuttle hook	Double-size rotary hook	Triple-size rotary hook
Needle		DP x 17 #21		
Max. speed <sup>(Note 1)</sup>		Intermittent: 2,000rpm Continuous: 2,000rpm	Intermittent: 2,300rpm Continuous: 2,300rpm	
Feeding system		Intermittent or continuous (switchover method)		
Stitch length		0.1 to 20.0mm (min. resolution 0.1mm)		
Max. stitches		20,000 stitches/pattern		
Max. patterns <sup>(Note 2)</sup>		9,000		
Memory medium		USB flash memory		
Work holder		Chucking system		
Thread break detection, skipped stitch detection <sup>(Note 3)</sup>		Standard equipment		
Stitch alert <sup>(Note 3)</sup>		-		
Outline dimensions		2,522 x 2,112 x 1,205mm (WxDxH)		
Mass		650kg		
Power supply		200 to 240V single-phase/three-phase		

# Software that enhances J Series usability

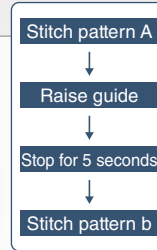
## PTN-JX

**Creation and correction of stitching patterns**

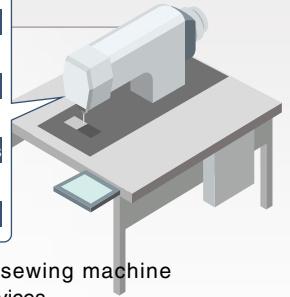
Allows stitching patterns to be created on a personal computer screen.

## PLKJ-STEP

**Creation and editing of simple sequences**



Programs the sewing machine and external devices.



## PLKJ-SET

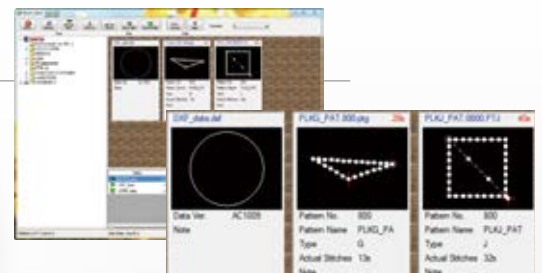
**Editing of settings**



Settings made in the sewing machine's operation panel can be easily edited from a personal computer.

## PLKJ-VIEW

**Data management**



Displays sewing machine data as a tree or thumbnail for easy management.

## DXF Converter

**Conversion and editing of CAD data**

Allows easy correction of stitching patterns.

**Paid version PTN-JX**



**Free version**



Free versions can be downloaded from the following URL.  
[https://www.juki.co.jp/technosolutions/english/sewing\\_machine/download/software.html](https://www.juki.co.jp/technosolutions/english/sewing_machine/download/software.html)

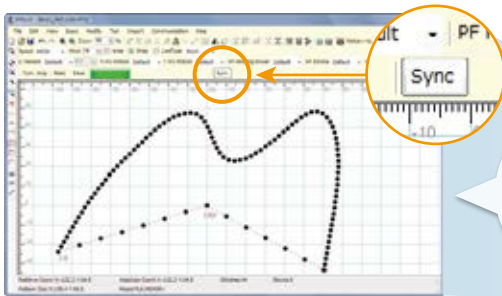
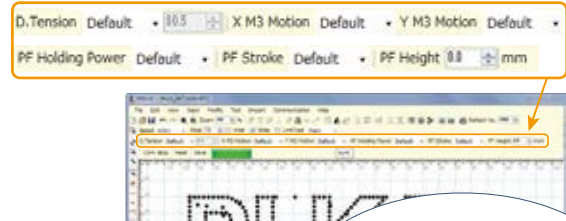


## Create and edit stitching patterns on a personal computer screen

Paid version

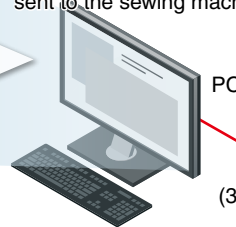
➔ Test the stitching immediately

- Control stitching quality.  
The feed motion, presser foot motion, and digital tension can be set in the stitching data.
- Data can be read, edited, and written to a PLK Series sewing machine. (Supported models: PLK-J, G, E, B Series)
- Synchronization mode



(1) Correct on the personal computer's large screen.

- (2) Click the Synchronize button. The corrected data will be sent to the sewing machine.



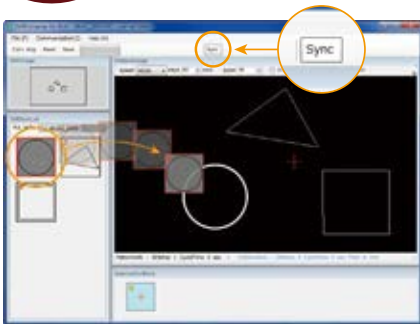
(3) Stitching can be tested immediately with the USB connection.



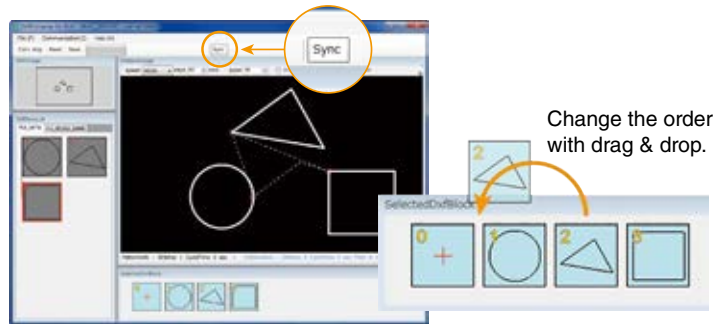
## Convert CAD data into stitching data

Paid version

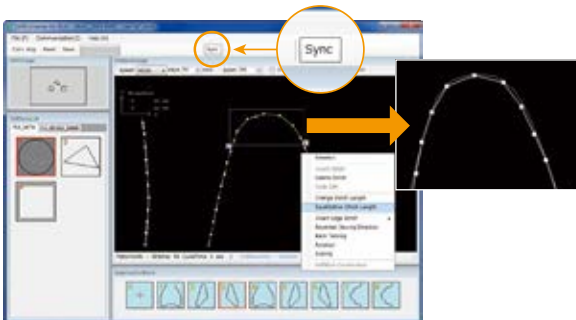
➔ Make quick corrections with intuitive operations



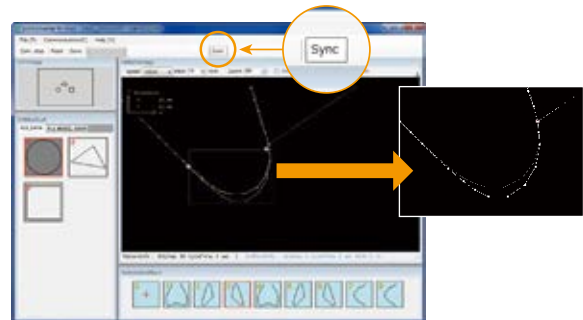
Drag & drop the stitching pattern from the block list.



Easily change the stitching order in parts (block) units.



Select part of the stitching pattern to make the stitch length uniform.



Easily change the stitching pattern size.



# PLK- Series

Make a difference in various fields  
with superior sewing power

## Max. speed of 2,800 stitches/minute

Feedback control is used for the XY table mechanism to deliver intermittent high-speed stitching.\*1

\* PLK-G1010, G2516, G2010R, and G2516R only

\*1

[Measurement conditions]  
Stitching data: Square (100 x 100mm) + diagonal  
Number of stitches: 232  
Stitch length: 3mm  
Stitching speed: 2,800rpm (PLK-G Series)  
(2,440rpm (PLK-E Series))

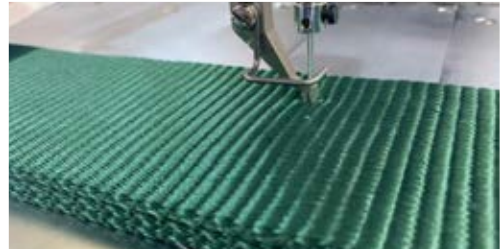
## Beautiful stitches

Improvements to the rigidity of the presser foot mechanism and feed mechanism coupled with the latest feed control (feedback control) ensure beautiful and accurate stitches from low to high speed, such as for corners and straight seam lines according to sewing data. In addition, the use of both rotary and shuttle hooks provides stable stitching depending on the fabric that is sewn.



## Powerful needle penetration force

Equipped with an improved 750W direct servo motor, this series realizes one of the strongest needle penetration force in the industry. Stitching can be performed easily even at low speeds (200rpm) for thread trimming and start of stitching, which are conventionally difficult.



## Programmable presser foot height control

This series is equipped with a function for programming the presser foot height. Changing the presser foot height according to the thickness of the material can prevent skipped stitches and thread breaks. The programmed presser foot height is stored in the stitching data; therefore, the presser foot height does not need to be adjusted even if the thickness of the material varies by the stitching pattern.



## Improved work efficiency

Use of USB memory and a high-speed processing system greatly reduces the time required to input and correct pattern data with a large number of stitches, which used to be time consuming. In addition, the jog key ensures speedy clamp movement for improved work efficiency.



## Chucking specifications (Optional)

Chucking specifications are available on all wide-area series<sup>\*2</sup>. With chucking specifications, it is possible to prepare the next sewing material during stitching. It also enables a single person to operate multiple sewing machines, thereby improving work efficiency and productivity.

\*2. PLK-G4030/G4030R, PLK-G6030/G6030R, PLK-G5050/G5050R,  
PLK-G10050/G10050R



## Compatible with extra-thick materials (equipped with an extra-thick thread trimmer)

This is ideal for stitching safety belts, suspension fittings, and sling belts for lifting. Thread fraying is prevented by an extra-thick needle thread and bobbin thread trimmer that uses a heat cutter.

\* PLK-G2008H only



## PLK-G1010/1010-K2



## PLK-G2008H

## PLK-G2008H-BTRM



### Sewing area

#### 100 x 100mm: PLK-G1010/1010-K2

Item	Model	PLK-G1010	PLK-G1010-K2
Stitching style		Single-needle lockstitch	
Hook		Double-size shuttle hook	
Needle		DP x 17 #18	
Max. speed <sup>(Note 1)</sup>		Intermittent feed 2,800rpm, Continuous feed 2,800rpm	
Feeding system		Intermittent or continuous (switchover method)	
Stitch length		0.1 to 20.0mm (min. resolution 0.1mm)	
Max. stitches		20,000 stitches/pattern	
Max. patterns <sup>(Note 2)</sup>		900/internal memory	
Memory medium		USB flash memory (not provided with sewing machine) (USB-connected floppy disk drive may also be used)	
Work holder		Electromagnetic	Pneumatic
Zoom function		10 to 200% per X/Y axis (variable by 0.1% step)	
Outer presser foot lift stroke		Max. 25mm	Max. 30mm
Manual holder system		Standard	—
Presser foot lift stroke		Max. 15mm (min. setting unit 0.2mm)	
Presser foot stroke		4 to 10mm	
Main shaft motor		750W direct servo motor	
Operation panel		5.7-inch LCD touch panel, white LED backlight	
Outline dimensions		1,200 x 867 x 1,225mm (WxDxH) (not including thread stand)	
Mass		133kg	
Power supply		220 to 240V single-phase/three-phase	

Note 1: Sewing speed may be limited by the type of sewing material, presser weight, stitch length, etc.

Note 2: Max. patterns may be limited depending on the number of stitches per pattern in the memory.

### Sewing area

#### 200 x 80mm: PLK-G2008H/2008H-BTRM

Item	Model	PLK-G2008H	PLK-G2008H-BTRM
Stitching style		Single-needle lockstitch	
Hook		Special semi-rotation hook (with bobbin removal mechanism)	
Needle		794 #230	
Max. speed <sup>(Note 1)</sup>		Intermittent feed 700rpm, Continuous feed 700rpm	
Feeding system		Intermittent or continuous (switchover method) * Intermittent recommended	
Stitch length		0.1 to 20.0mm (min. resolution 0.1mm)	
Max. stitches		20,000 stitches/pattern	
Max. patterns <sup>(Note 2)</sup>		900/internal memory	
Memory medium		USB flash memory (not provided with sewing machine) (USB-connected floppy disk drive may also be used)	
Work holder		Pneumatic	
Zoom function		10 to 200% per X/Y axis (variable by 0.1% step)	
Outer presser foot lift stroke		Max. 20mm	
Thread cutting system		Heat cut system	Heat cut system (lower thread cutting only)
Presser foot lift stroke		25mm	
Main shaft motor		XL-G554-20(Y)	
Operation panel		5.7-inch LCD touch panel, white LED backlight	
Outline dimensions		1,200 x 780 x 1,320mm (WxDxH) (not including thread stand)	
Mass		172kg	170kg
Power supply		200 to 240V single-phase/three-phase	

## PLK-G2010R



### Sewing area 200 x 100mm: PLK-G2010R

Item	Model	PLK-G2010R
Stitching style		Single-needle lockstitch
Hook		Double-size rotary hook
Needle		DP x 17 #18
Max. speed <sup>(Note 1)</sup>		Intermittent feed 2,800rpm, Continuous feed 2,800rpm
Feeding system		Intermittent or continuous (switchover method)
Stitch length		0.1 to 20.0mm (min. resolution 0.1mm)
Max. stitches		20,000 stitches/pattern
Max. patterns <sup>(Note 2)</sup>		900/internal memory
Memory medium		USB flash memory (not provided with sewing machine) (USB-connected floppy disk drive may also be used)
Work holder		Pneumatic
Zoom function		10 to 200% per X/Y axis (variable by 0.1% step)
Outer presser foot lift stroke		Max. 30mm
Manual holder system		Option
Presser foot lift stroke		Max. 15mm (min. setting unit 0.2mm)
Presser foot stroke		4 to 10mm
Main shaft motor		750W direct servo motor
Operation panel		5.7-inch LCD touch panel, white LED backlight
Outline dimensions		1,200 x 930 x 1,230mm (WxDxH) (not including thread stand)
Mass		147kg
Power supply		220 to 240V single-phase/three-phase

## PLK-G2516

## PLK-G2516R



### Sewing area 250 x 160mm: PLK-G2516/2516R

Item	Model	PLK-G2516	PLK-G2516R
Stitching style		Single-needle lockstitch	
Hook		Double-size shuttle hook	Double-size rotary hook
Needle		DP x 17 #18	
Max. speed <sup>(Note 1)</sup>		Intermittent feed 2,800rpm, Continuous feed 2,800rpm	
Feeding system		Intermittent or continuous (switchover method)	
Stitch length		0.1 to 20.0mm (min. resolution 0.1mm)	
Max. stitches		20,000 stitches/pattern	
Max. patterns <sup>(Note 2)</sup>		900/internal memory	
Memory medium		USB flash memory (not provided with sewing machine) (USB-connected floppy disk drive may also be used)	
Work holder		Pneumatic	
Zoom function		10 to 200% per X/Y axis (variable by 0.1% step)	
Outer presser foot lift stroke		Max. 30mm	
Manual holder system		Option	
Presser foot lift stroke		Max. 15mm (min. setting unit 0.2mm)	
Presser foot stroke		4 to 10mm	
Main shaft motor		750W direct servo motor	
Operation panel		5.7-inch LCD touch panel, white LED backlight	
Outline dimensions		1,200 x 1,068 x 1,230mm (WxDxH) (not including thread stand)	
Mass		161.5kg	168.5kg
Power supply		220 to 240V single-phase/three-phase	

## PLK-G2516-YU



## PLK-G4030

## PLK-G4030R



### Sewing area 300 x 200mm: PLK-G2516-YU

Item	Model	PLK-G2516-YU
Stitching style		Single-needle lockstitch
Hook		Double-size shuttle hook
Needle		DP x 17 #18
Max. speed <sup>(Note 1)</sup>		Intermittent feed 2,300rpm, Continuous feed 2,300rpm
Feeding system		Intermittent or continuous (switchover method)
Stitch length		0.1 to 20.0mm (min. resolution 0.1mm)
Max. stitches		20,000 stitches/pattern
Max. patterns <sup>(Note 2)</sup>		900/internal memory
Memory medium		USB flash memory (not provided with sewing machine) (USB-connected floppy disk drive may also be used)
Work holder		Pneumatic
Zoom function		10 to 200% per X/Y axis (variable by 0.1% step)
Outer presser foot lift stroke		Max. 30mm
Manual holder system		-
Presser foot lift stroke		Max. 15mm (min. setting unit 0.2mm)
Presser foot stroke		4 to 10mm
Main shaft motor		750W direct servo motor
Operation panel		5.7-inch LCD touch panel, white LED backlight
Outline dimensions		1,200 x 1,107 x 1,230mm (WxDxH) (not including thread stand)
Mass		163.5kg
Power supply		220 to 240V single-phase/three-phase

Note 1: Sewing speed may be limited by the type of sewing material, presser weight, stitch length, etc.

Note 2: Max. patterns may be limited depending on the number of stitches per pattern in the memory.

### Sewing area 400 x 300mm: PLK-G4030/4030R

Item	Model	PLK-G4030	PLK-G4030R
Stitching style		Single-needle lockstitch	
Hook		Double-size shuttle hook	Double-size rotary hook
Needle		DP x 17 #18	
Max. speed <sup>(Note 1)</sup>		Intermittent feed 2,000rpm, Continuous feed 2,000rpm	
Feeding system		Intermittent or continuous (switchover method)	
Stitch length		0.1 to 20.0mm (min. resolution 0.1mm)	
Max. stitches		20,000 stitches/pattern	
Max. patterns <sup>(Note 2)</sup>		900/internal memory	
Memory medium		USB flash memory (not provided with sewing machine) (USB-connected floppy disk drive may also be used)	
Work holder		Pneumatic	
Zoom function		10 to 200% per X/Y axis (variable by 0.1% step)	
Outer presser foot lift stroke		Max. 30mm	
Chucking equipment		Special specifications	
Presser foot lift stroke		12mm (max. 15mm) (min. setting unit 0.2mm)	
Presser foot stroke		4 to 10mm	
Main shaft motor		750W direct servo motor	
Operation panel		5.7-inch LCD touch panel, white LED backlight	
Outline dimensions		1,081 x 1,572 x 1,234mm (WxDxH) (not including thread stand)	
Mass		420kg	430kg
Power supply		200 to 240V single-phase/three-phase	



**PLK-G6030** 

**PLK-G6030R** 



**Sewing area**  
**600 x 300mm: PLK-G6030/6030R**

Item	Model	PLK-G6030	PLK-G6030R
Stitching style		Single-needle lockstitch	
Hook		Double-size shuttle hook	Double-size rotary hook
Needle		DP x 17 #18	
Max. speed <sup>(Note 1)</sup>		Intermittent feed 2,000rpm, Continuous feed 2,000rpm	
Feeding system		Intermittent or continuous (switchover method)	
Stitch length		0.1 to 20.0mm (min. resolution 0.1mm)	
Max. stitches		20,000 stitches/pattern	
Max. patterns <sup>(Note 2)</sup>		900/internal memory	
Memory medium		USB flash memory (not provided with sewing machine) (USB-connected floppy disk drive may also be used)	
Work holder		Pneumatic	
Zoom function		10 to 200% per X/Y axis (variable by 0.1% step)	
Outer presser foot lift stroke		Max. 30mm	
Chucking equipment		Special specifications	
Presser foot lift stroke		12mm (max. 15mm) (min. setting unit 0.2mm)	
Presser foot stroke		4 to 10mm	
Main shaft motor		750W direct servo motor	
Operation panel		5.7-inch LCD touch panel, white LED backlight	
Outline dimensions		1,350 x 1,572 x 1,234mm (WxDxH) (not including thread stand)	
Mass		440kg	450kg
Power supply		200 to 240V single-phase/three-phase	

**PLK-G10050** 

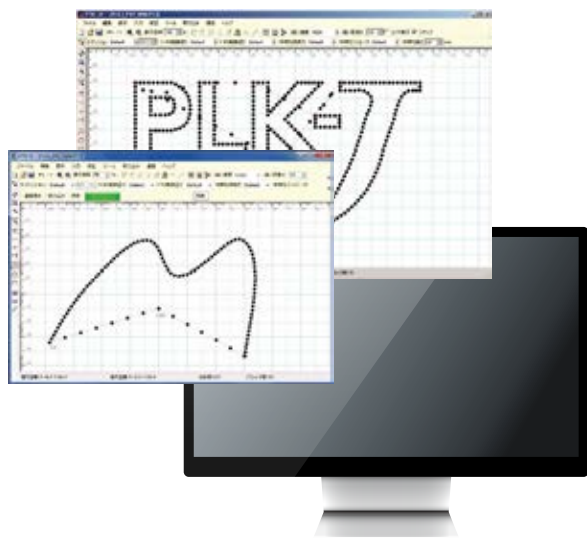
**PLK-G10050R** 



**Sewing area**  
**1,000 x 500mm: PLK-G10050/10050R**

Item	Model	PLK-G10050	PLK-G10050R
Stitching style		Single-needle lockstitch	
Hook		Double-size shuttle hook	Double-size rotary hook
Needle		DP x 17 #18	
Max. speed <sup>(Note 1)</sup>		Intermittent feed 1,600rpm, Continuous feed 2,000rpm	
Feeding system		Intermittent or continuous (switchover method)	
Stitch length		Intermittent feed 0.1 to 20.0mm, Continuous feed 0.1 to 4.3mm (min. resolution 0.1mm)	
Max. stitches		20,000 stitches/pattern	
Max. patterns <sup>(Note 2)</sup>		900/internal memory	
Memory medium		USB flash memory (not provided with sewing machine) (USB-connected floppy disk drive may also be used)	
Work holder		Pneumatic	
Zoom function		10 to 200% per X/Y axis (variable by 0.1% step)	
Outer presser foot lift stroke		Max. 30mm	
Chucking equipment		Special specifications	
Presser foot lift stroke		12mm (max. 15mm) (min. setting unit 0.2mm)	
Presser foot stroke		4 to 10mm	
Main shaft motor		750W direct servo motor	
Operation panel		5.7-inch LCD touch panel, white LED backlight	
Outline dimensions		2,105 x 1,855 x 1,234mm (WxDxH) (not including thread stand)	
Mass		500kg	510kg
Power supply		200 to 240V single-phase/three-phase	

# PTN-JX



Item	Model	PTN-JX
Recommended operation environment		
CPU		1.5GHz or higher 32bit (x86) or 64bit (x64) processor
OS		Windows®8/8.1 (32bit/64bit)/Windows®10 (32bit/64bit)
RAM		32bit: 1GB or more, 64bit: 2GB or more
HDD		Windows®8/8.1, Windows®10 : 32bit (16GB or more open space), Windows®8/8.1, Windows®10 : 64bit (20GB or more open space)
Monitor resolution		Capable of displaying 1024x768 or higher
Monitor color setting		Full color (32bit) or higher
Peripheral devices		CD-ROM drive (used for installation), USB memory (medium for electronic sewing machine and pattern data), USB port x 2 (for USB memory or USB communication, for protection key), RS-232C port (when exchanging stitching data between PTN-GX and sewing machine)

\*1. The CPU, memory, and hard disk specifications may vary depending on the amount of data being processed.

\*2. A relatively high PC performance is required for the best use.

Windows is a trademark or registered trademark of Microsoft Corporation in the United States and other countries.

Main specifications	
Protector type	USB
Input type	Linear, arc, circle, curve, polygonal line, point, multiple/offset, zigzag, tacking (same input functions as PLK-J Series electronic sewing machines)
Modification type	Delete, insert, change, move, convert, code (in addition to PLK-J Series electronic sewing machine modification function, data can be deleted, inserted and moved in block units)
Display scale	20 to 5000%
Grid line pitch	0.1 to 100mm, or hidden
Input method	Personal computer mouse, coordinate value input (absolute coordinate, relative coordinate)
Supported data types	Data compatible with PLK electronic sewing machines (J, G data)* <sup>1</sup> DXF data* <sup>2</sup> (R12, R13, R14), embroidery data (only specified versions are supported)

\*1. G data is read only.

\*2. Some restrictions apply to the data conversion function. Please refer to the instruction manual before use.

# Optional equipment

## Pneumatic 2-stage tension equipment MP-G10-AT



## Upper thread break detection equipment MP-G10-TS



Product name	Model	G1010	G2010R	G2516R	G2516/ G2516-YU	G4030/ G4030R	G6030 G6030R	G5050 G5050R	G10050 G10050R	Application
Pneumatic holder	MP-G10-AO	○	-	-	-	-	-	-	-	Ideal for sewing projects that require strong holding force.
2-tier left-right alternate holder	MP-G10-K2	○	-	-	-	-	-	-	-	The left and right holders can be lowered individually, making it ideal for parts and labeling.
Pneumatic inverted holder	MP-G10-AH	○	-	-	-	-	-	-	-	Equipment for sewing the full circumference of parts and labels.
Pneumatic 2-stage tension equipment	MP-G10-AT	○	-	-	-	-	-	-	-	Uniformizes the differences in sewing conditions due to changes in sewing direction or thickness.
	MP-G20-AT	-	○	○	○	-	-	-	-	
	MP-G40-AT	-	-	-	-	○	○	○	○	
Area expansion kit	MP-G10-EX	○	-	-	-	-	-	-	-	Can be expanded up to 210mm in the X axis direction.
Upper thread holder	MP-G10-TH	○	-	-	-	-	-	-	-	Holds the upper thread after cutting and prevents tangles when starting to sew.
	MP-G20R-TH	-	○	○	○	○	○	○	○	
Upper thread break detection equipment	MP-G10-TS	○	-	-	-	-	-	-	-	Detects upper thread breaks and stops the sewing machine.
	MP-G25-TS	-	○	○	○	-	-	-	-	
	MP-G40-TS	-	-	-	-	○	○	-	-	
	MP-G50-TS	-	-	-	-	-	-	○	○	
I/O expansion unit	MP-G10-TE	○	-	-	-	-	-	-	-	Expands the number of I/O points for connecting to the sewing machine. (Additional 12 input and 12 output points)
	MP-G20-TE	-	○	○	○	-	-	-	-	
	MP-G40-TE	-	-	-	-	○	○	-	-	
	MP-G50-TE	-	-	-	-	-	-	○	○	

# Lockstitch vertical feed

**Our proven vertical feed mechanism and servo motor improve ease of use and increase productivity. The high long arm enables diverse sewing projects.**

The reliable vertical feed mechanism firmly captures material that is difficult to feed and slippery fabric, demonstrating the power to create reliable stitches. In addition, sewing machine operability and sewability are further improved by using the Limiservo XC-G Series.



## Vertical feed mechanism for reliable feeding



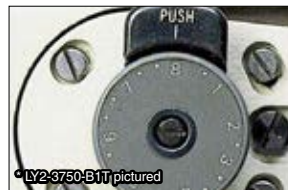
Uses vertical feed to clamp and reliably feed material that is difficult to feed.

## Stable thread cutting performance from thin to thick threads



Our proven left female rotating and right female fixed meshing system enables excellent cutting of thread from fine to thick threads (#6). (Supports LY2-3750/LY2-3310)

## Stitch adjustment dial with simple forward/backward seam pitch adjustment lock



Adjustments can be easily made by turning the adjustment pin on the front of the arm. (Supports LY2-3750/LY3-6840)

## Automatic oil lubrication system for easy maintenance



An automatic oil lubrication system eliminates the need to feed oil. Oil in the oil tank is supplied by pump to required areas, thereby improving durability of the sewing machine. (Supports LY2-3750/LY3-6840)

## Built-in detector that detects the position with high accuracy



Upper and lower needle stop positions can be separately adjusted with a single operation. The display lamp shows the power status at a single glance. (Supports LY2-3750/LY2-3310/LY3-6840)

## Hold-up lever on the front of the arm



The hold-up lever is equipped on the front of the arm for improved operability. (Supports LY2-3750/LY3-6840)

## Touchback switch



Light touch for quick response. Enables needle raising and correction stitches. (Supports LY2-3750/LY2-3310/LY3-6840)

## Standing and sitting T-type table legs

The control panel comes complete with functions for standing sewing machines. (Thread cutting type)

## Variable speed lever

Lever can be mounted on the side of the control panel.

- Easy disassembly from the control panel.
- A pedal for standing sewing machines can be easily installed.

## Powerful and high-performance Limiservo XC-G Series

- Comes with a simple sequence function.
- The reverse needle raising function enables easy insertion and removal of materials.
- The fabric stop function ensures proper needle drop location.

Single-needle lockstitch: Vertical feed

## LY2-3750-B1T



Item	Model	LY2-3750-B1T
Stitching style		Single-needle lockstitch
Application		Thick items
Max. speed		2,000rpm
Max. stitch length		8mm
Holder lift stroke (manual)		6mm
Holder lift stroke (knee)		16mm
Needle		DP x 17 #22 (DB x 1 #22)
Hook		Vertical double-size rotary hook
Needle bar stroke		38mm
Thread cutting equipment		Available
Touchback equipment		Available
Oil lubrication		Automatic oil lubrication system
Upper feed foot alternate amount		2 to 5mm (dial system)
Bed shape		Flat bed system
Throat length		335mm
Bed dimensions		517 x 178mm
Mass		34kg

Single-needle lockstitch: Vertical feed

## LY2-3300-B0B



Item	Model	LY2-3300-B0B
Stitching style		Single-needle lockstitch
Application		Thick items
Max. speed		2,000rpm
Max. stitch length		8mm
Holder lift stroke (manual)		6mm
Holder lift stroke (knee)		13mm
Needle		DP x 17 #22 (DB x 1 #22)
Hook		Vertical double-size rotary hook
Needle bar stroke		35mm
Thread cutting equipment		Not available
Touchback equipment		Not available
Oil lubrication		Manual lubrication
Upper feed foot alternate amount		2 to 5mm (long groove adjustment type)
Bed shape		Flat bed system
Throat length		279mm
Bed dimensions		475 x 178mm
Mass		29kg

Single-needle lockstitch: Vertical feed

## LY2-3310-B1T



Item	Model	LY2-3310-B1T
Stitching style		Single-needle lockstitch
Application		Thick items
Max. speed		2,000rpm
Max. stitch length		8mm
Holder lift stroke (manual)		6mm
Holder lift stroke (knee)		13mm
Needle		DP x 17 #22 (DB x 1 #22)
Hook		Vertical double-size rotary hook
Needle bar stroke		38mm
Thread cutting equipment		Available
Touchback equipment		Available
Oil lubrication		Manual lubrication
Upper feed foot alternate amount		2 to 5mm (long groove adjustment type)
Bed shape		Flat bed system
Throat length		279mm
Bed dimensions		475 x 178mm
Mass		32kg

Single-needle lockstitch: Vertical feed  
(cylindrical high long arm)

## LY3-6840-B0T



Item	Model	LY3-6840-B0T
Stitching style		Single-needle lockstitch
Application		Thick items
Max. speed		2,000rpm
Max. stitch length		7mm
Holder lift stroke (manual)		6mm
Holder lift stroke (knee)		15mm
Needle		DP x 17 #22 (DB x 1 #22)
Hook		Vertical double-size rotary hook
Needle bar stroke		38mm
Thread cutting equipment		Not available
Touchback equipment		Available
Oil lubrication		Automatic oil lubrication system
Upper feed foot alternate amount		2 to 5mm (dial system)
Bed shape		Cylinder bed system (cylinder diameter 47mm)
Throat length		335mm
Bed dimensions		Not available
Mass		39kg

Note: Mass includes the mass of the sewing machine only.  
Note: An operation caution sticker is attached to the sewing machine unit.

# Lockstitch unison feed

## New high-performance model with long arm and support for unison feed holders for sewing car seats, bags, sofas, and other thick projects

Introducing a new tried and trusted unison feeding sewing machine for sewing thick projects with a new shortened thread cutting device added to the car seat (CS) specifications. Complete with features and operability including stable sewing, use of built-in detector for lower position adjustment, and improved maintenance. Sewing machine operability and sewability are further improved by using the Limiservo XC-G Series.



### Lineup of car seat (CS) specifications



The lineup includes a CS-specification model for sewing car seats and other projects. Changes have been made to the balance stroke and feed motion to further improve sewing quality in seat sewing projects.

### Stable thread cutting performance from thin to thick threads



The meshing of the fixed female and the female linearly moving in parallel with the feed dog enables excellent cutting of thread from fine to thick threads (#8).

### Reverse needle raising function (when using Limiservo X)



After thread cutting, the reverse function of the sewing machine can be used to prevent the needle from coming out from the holder and to ensure the holder is raised to 16mm. This function ensures easy insertion and removal of thick materials.

### 2-fold hook max. speed for 3,000 stitches/minute



A maximum speed of 3,000 stitches/minute can be achieved with a 2-fold hook thanks to improvements to the needle bar swing mechanism, balance mechanism, and upper vertical feed mechanism. (Supports LU2-4652)

### Touchback switch with release function

Turning the button releases the touchback function. (Supports LU2-4410/LU2-4430)

### Stitch adjustment dial with lock

Reliably prevents stitch change problems during sewing.

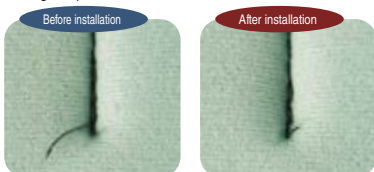
### Automatic presser bar device

Setup is made easier.  
\* Optional on the LU2-4400 Series and built-in on LU2-4652.

### Shortened thread cutting device (LU-ST-KIT)

The amount of thread that remains after thread cutting is shortened so that no thread nipping is needed.

Sewing sample



\* Optional on the LU2-4410 Series and standard-equipped on LU2-4652.

### Single-needle lockstitch: Unison feed

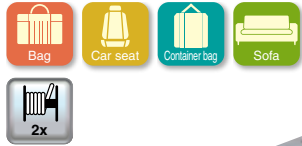
## LU2-4410-B1T-CS



Item	Model	LU2-4410-B1T-CS
Stitching style		Single-needle lockstitch
Application		Car seat
Max. speed		2,000rpm
Max. stitch length		9mm
Holder lift stroke (manual)		8mm
Holder lift stroke (knee)		16mm
Needle		DP x 17 #21
Hook		Horizontal double-size rotary hook
Needle bar stroke		35mm
Thread cutting equipment		Available
Touchback equipment		Available
Oil lubrication		Automatic oil lubrication system
Needle width (standard)		Not available
Needle width (special)		Not available
Upper feed foot alternate amount		2 to 6mm
Bed shape		Flat bed system
Throat length		250.5mm
Bed dimensions		517 x 178mm
Mass		36kg

Single-needle lockstitch: Unison feed

# LU2-4400-B0B



Item	Model	LU2-4400-B0B
Stitching style		Single-needle lockstitch
Application		Thick items
Max. speed		2,000rpm
Max. stitch length		9mm
Holder lift stroke (manual)		8mm
Holder lift stroke (knee)		16mm
Needle		DP x 17 #23
Hook		Horizontal double-size rotary hook
Needle bar stroke		36mm
Thread cutting equipment		Not available
Touchback equipment		Not available
Oil lubrication		Automatic oil lubrication system
Needle width (standard)		Not available
Needle width (special)		Not available
Upper feed foot alternate amount		2 to 6mm
Bed shape		Flat bed system
Throat length		250.5mm
Bed dimensions		517 x 178mm
Mass		33kg

Double-needle lockstitch: Unison feed

# LU2-4420-B0B



Item	Model	LU2-4420-B0B
Stitching style		Double-needle lockstitch
Application		Thick items
Max. speed		2,000rpm
Max. stitch length		9mm
Holder lift stroke (manual)		8mm
Holder lift stroke (knee)		16mm
Needle		DP x 17 #23
Hook		Horizontal double-size rotary hook
Needle bar stroke		36mm
Thread cutting equipment		Not available
Touchback equipment		Not available
Oil lubrication		Automatic oil lubrication system
Needle width (standard)		6.4mm
Needle width (special)		9.5mm
Upper feed foot alternate amount		2 to 6mm
Bed shape		Flat bed system
Throat length		250.5mm
Bed dimensions		517 x 178mm
Mass		34kg

Double-needle lockstitch: Unison feed

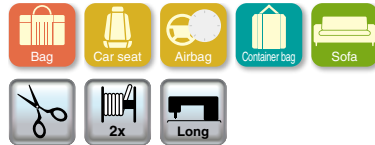
# LU2-4430-B1T



Item	Model	LU2-4430-B1T
Stitching style		Double-needle lockstitch
Application		Thick items
Max. speed		2,000rpm
Max. stitch length		9mm
Holder lift stroke (manual)		8mm
Holder lift stroke (knee)		16mm
Needle		DP x 17 #23
Hook		Horizontal double-size rotary hook
Needle bar stroke		36mm
Thread cutting equipment		Available
Touchback equipment		Available
Oil lubrication		Automatic oil lubrication system
Needle width (standard)		6.4mm
Needle width (special)		3.2/4.0/4.8/8.0/9.5/16.0mm
Upper feed foot alternate amount		2 to 6mm
Bed shape		Flat bed system
Throat length		250.5mm
Bed dimensions		517 x 178mm
Mass		37kg

Single-needle lockstitch: Unison feed

# LU2-4652-B1T



Item	Model	LU2-4652-B1T
Stitching style		Single-needle lockstitch
Application		Thick items
Max. speed		3,000rpm
Max. stitch length		8mm
Holder lift stroke (manual)		9mm
Holder lift stroke (knee)		16mm
Needle		DP x 17 #21
Hook		Horizontal double-size rotary hook
Needle bar stroke		35mm
Thread cutting equipment		Available
Touchback equipment		Available
Oil lubrication		Automatic oil lubrication system
Needle width (standard)		Not available
Needle width (special)		Not available
Upper feed foot alternate amount		2 to 6mm (dial system)
Bed shape		Flat bed system
Throat length		310mm
Bed dimensions		517 x 178mm
Mass		43kg

Note: Mass includes the mass of the sewing machine only.

Note: An operation caution sticker is attached to the sewing machine unit.

## Single-needle

# LU2-4710-B1T



Item	Model	LU2-4710-B1T
Stitching style		Single-needle
Application		Heavy material
Max. speed		3,000rpm
Max. stitch length		0 - 9mm
Holder lift stroke (manual)		9mm
Holder lift stroke (knee)		16mm
Needle		DP x 17 #23
Hook		Horizontal full-rotating Large
Needle bar stroke		36mm
Thread cutting equipment		○
Touchback equipment		○
Oil lubrication		Automatic lubrication
Needle width (standard)		-
Needle width (special)		-
Upper feed foot alternate amount		2 - 6mm (dial)
Bed shape		Flat bed
Throat length		250.5mm
Bed dimensions		517 x 178mm
Mass		47kg (sewing machine head)

## Double-needle

# LU2-4730-B1T



Item	Model	LU2-4730-B1T
Stitching style		Double-needle
Application		Heavy material
Max. speed		2,500rpm
Max. stitch length		0 - 9mm
Holder lift stroke (manual)		9mm
Holder lift stroke (knee)		16mm
Needle		DP x 17 #23
Hook		Horizontal full-rotating Large
Needle bar stroke		36mm
Thread cutting equipment		○
Touchback equipment		○
Oil lubrication		Automatic lubrication
Needle width (standard)		3.2mm
Needle width (special)		6.4mm
Upper feed foot alternate amount		2 - 6mm (dial)
Bed shape		Flat bed
Throat length		250.5mm
Bed dimensions		517 x 178mm
Mass		47kg (sewing machine head)

Note: Mass includes the mass of the sewing machine only.

Note: An operation caution sticker is attached to the sewing machine unit.





# Motor

Variable speed motor with automatic fixed position stop device

## Limiservo X G Series

### ■ Motor

Item \ Model	XL-G554-10Y	XL-G554-20Y	XL-G754-20Y
Voltage	100 to 120V	200 to 240V	200 to 240V
Output	550W	550W	750W
Rated speed	3600rpm	3600rpm	3600rpm
Output shaft	Tapered shaft		



### ■ Control panel

Item \ Model	XC-GMFY-10-05	XC-GMFYCE-20-05 <sup>*1</sup>	XC-GMFY-20-05	XC-GMFY-20-07
Output	550W	550W	550W	750W
Power supply (phase)	Single-phase	Single-phase	Single-phase/three-phase (Note)	Single-phase/three-phase (Note)
Power supply (voltage)	100 to 120V	200 to 240V	200 to 240V	200 to 240V
Functions	Equipped with full functions including automatic thread cutting, presser foot lifting, fixed needle, line bar, and lock stitching. Equipped with simple sequence and computer communication function. Equipped with 8 solenoid drive outputs, 2 solenoid valve outputs, 1 small signal output, and 14 input terminals including variable voltage input.			

Note: See the instruction manual for the connection method.

\*1: Type [XC-GMFYCE] is CE marking type.

User-friendly functions	Computer interface
	<ul style="list-style-type: none"> <li>Use the setup software to manage setting data such as to batch write/load and save settings. (XCG_SET)</li> <li>Use the step sequence software to create and edit step sequences. (XCG_STEP)</li> </ul>

XC-G500-Y-CE control switch panel

## XC-G500-Y-CE



Item \ Model	XC-G500-Y-CE
Number of number displays	5
Straight stitch	Available
Straight stitch (lock stitch)	6 types
Straight stitch (fixed needle sewing)	Available (1 to 9999 stitches)
Continuous fixed needle sewing	Max. 8 patterns and 25 steps depending on the program
Continuous fixed needle sewing (lock stitch)	6 types
Up/down counter	Up counter: 1 type (4 digits) Down counter: 1 type (4 digits)
Thread cutting (release) key	Available
Automatic key	Available
Slow start key	Available
Control panel setting data copy function	Read and write setting data (for 2 models)
Program key LED	Configurable input switch: 3 types Configurable output LED: 3 types

XC-G10S-CE/L-CE control switch panel

## XC-G10S-CE/L-CE



Item \ Model	XC-G10S-CE/L-CE
Number of number displays	5
Straight stitch	Available
Straight stitch (lock stitch)	6 types
Straight stitch (fixed needle sewing)	Available (1 to 9999 stitches)
Up/down counter	Up counter: 1 type (4 digits) Down counter: 1 type (4 digits)

## LE-FA Automatic pneumatic presser bar

Presser bar torque is approximately double that of the electromagnetic model (XC-FM-2) with a normal air pressure of approximately 0.49MPa (5kg/cm<sup>2</sup>).



Air pressure use range	Continuous 0.147MPa to 0.97MPa (1.5kg/cm <sup>2</sup> to 9.9kg/cm <sup>2</sup> )
Presser bar torque	Max. 13.73N•m (max. 140kg•cm) with air pressure of 0.49MPa (5kg/cm <sup>2</sup> )
Application	For thick materials (especially sewing machines with strong presser pressure)

## XC-CVS-3 Variable speed pedal

Variable speed operation is possible for standing work. It is especially effective such as when sewing corner curves.

- Variable speed operation is possible according to how much the pedal is depressed.
- The pedal can be easily secured on the table leg side rail.
- External signal operation is possible by using the foot switch for thread trimming and presser foot operation.



# PLK-J-LAN LAN unit for XC-G/PLK-G

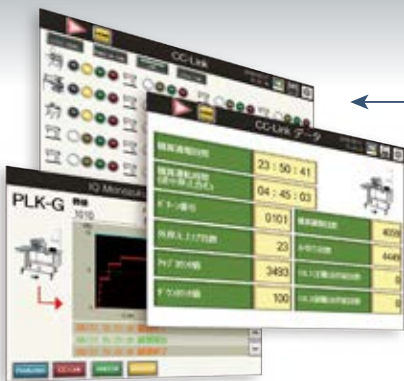
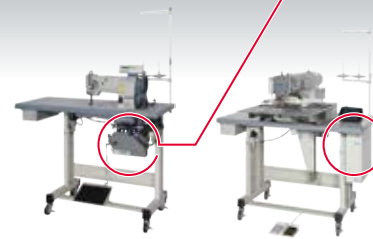
Build a system for data collection and visualization using original network

Collect various sewing information from the sewing machine to support visualization of the sewing site



Develop real-time production information to each department in a timely manner

- **Production managers**
  - Understand progress information
  - Manage and improve processes
  - Manage workers
- **Workers**
  - Confirm work amount
  - Instruct work details
- **System maintenance personnel**
  - Respond to trouble
  - Preventive maintenance
  - Swift maintenance

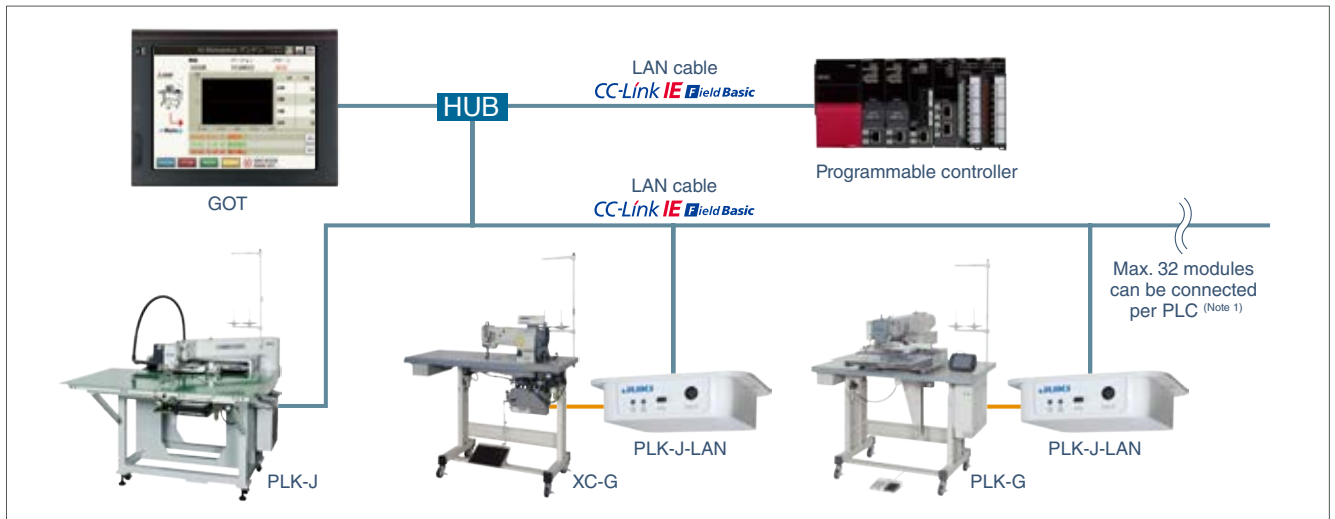


**Collect information on sewing!**

Sewing time / Idle time / Cumulative operation time / Stitched quantity / Error details / Thread trimming count / Lubrication count, etc.

## Image of LAN module connection

The LAN module is connected to the sewing machine with a serial cable, so there's no need for a separate power supply. CC-Link IE Field Basic is supported with post-installation, allowing IoT to be achieved.



Item	XC-G	PLK-G
Communication interface	Ethernet (Note 2) communication (CC-Link IE Field Basic compatible)	
	Serial communication (control panel, operation box)	
Connection equipment	XC-G Series control panel Operation panel (XC-G10/G500)	PLK-G Series control panel (Note 3) (Note 4)
External device	Digital input x 2, analog input x 2, digital output x 2, analog output x 1 (total 7) (rear connectors) (Note 5)	
Rating	12V DC, supplied from XC-G control panel	12V DC, supplied from PLK-G control panel
Outline dimensions	125 x 155 x 40mm (WxDxH)	
Mass	300g	

Note 1: Depends on programmable controller performance.

Note 2: Ethernet is a trademark of Fuji Xerox Co., Ltd.

Note 3: PLK-G Series requires a system update (Ver. 18 or higher).

Note 4: Not compatible with PLK-G1306.

Note 5: Connectors sold separately. (Supported as an option)





<https://www.juki.co.jp/en>

## JUKI CORPORATION

SEWING MACHINERY & SYSTEMS BUSINESS UNIT

2-11-1, TSURUMAKI, TAMA-SHI, TOKYO 206-8551, JAPAN  
PHONE: (81) 42-357-2383 FAX: (81) 42-357-2274

## JUKI TECHNOSOLUTIONS CORPORATION

NAGOYA OFFICE

2039-1, SHIMOI, SHIMOI-MACHI, OWARIASAHI-SHI, AICHI 488-0052, JAPAN  
PHONE: (81) 561-56-1082 FAX: (81) 561-56-0830



- Specifications and appearance are subject to change without prior notice for improvement.
- Read the instruction manual before putting the machine into service to ensure safety.
- This catalogue prints with environment-friendly soyink on recycle paper.
- Paper from responsible sources **FSC™ C001712**

SEPTEMBER, 2022 Printed in Japan(IP)