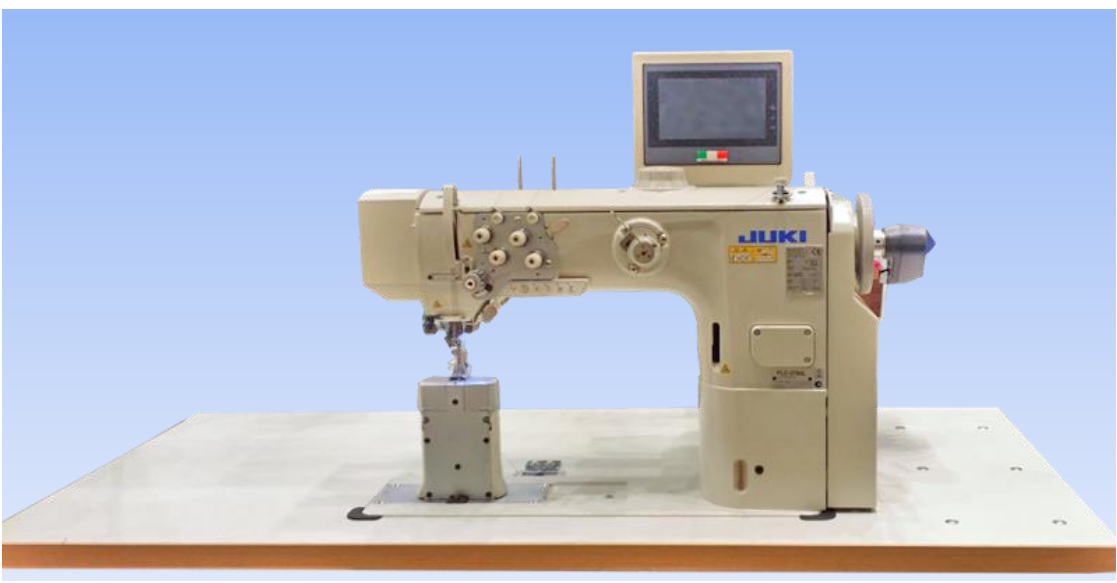


PLC-2760LC-RMJ1-8

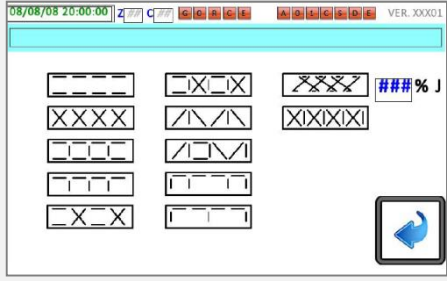
2-needle, Semi-dry, Post-bed, Unison-feed, Lockstitch Machine with Vertical-axis 2.0 Fold-Capacity Hook



Control Box

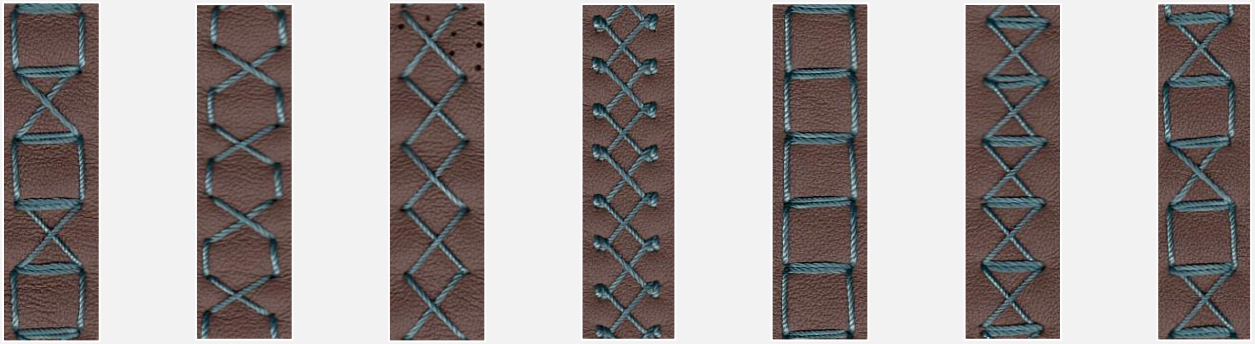
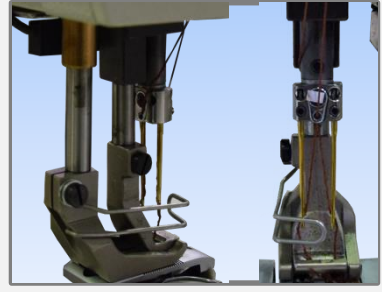
A dedicated control box allows for logical interface for the operator to select the applicable pattern.

The easy to navigate software makes selecting and changing stitching patterns simple for the operator.



Unique Turing Needle Bar System

A turning needle bar system with dedicated control box allows for abundant variety of different stitching patterns. The stitch length can be adjusted electronically making for much simpler interface for the operator. New stitch patterns can be added easily to the interface



There are a variety of patterns available as well as the option to add more.



JUKI America, Inc.

Tel.: 305-594-0059
Fax: 305-594-0720